



Hi Kids,

It's time to investigate PLANTS!

### Look at your plate...

We eat many plants every day.

- Fruits and vegetables are parts of plants!
- Carrots are part of the plant's root.
- Black beans grow in pods that hang from bean plant.
- The flour in bread and tortillas may come from wheat or corn plants.
- Look at your lunch. How many plants can you find? \_\_\_\_\_

### Go outdoors...

Find a plant to **observe** (that means study carefully).

Which plant parts can you see? Beware, these cannot be seen at all times of the year.

- Stem
- Leaves
- Roots
- Flower
- Seeds

*\*Visit your plant again in a few weeks. How has it changed?*

**A read-aloud story about PLANTS...** *Tops and Bottoms* by Janet Stevens - be ready to smile when you hear this story! 😊

<https://www.youtube.com/watch?v=sm5nAcqWmJU>



Hi Kids,

It's time to investigate PLANTS!

### Look at your plate...

We eat many plants every day.

- Fruits and vegetables are parts of plants!
- Carrots are part of the plant's root.
- Black beans grow in pods that hang from bean plant.
- The flour in bread and tortillas may come from wheat or corn plants.
- Look at your lunch. How many plants can you find? \_\_\_\_\_

### Go outdoors...

Find a plant to **observe** (that means study carefully).

Which plant parts can you see? Beware, these cannot be seen at all times of the year.

- Stem
- Leaves
- Roots
- Flower
- Seeds

*\*Visit your plant again in a few weeks. How has it changed?*

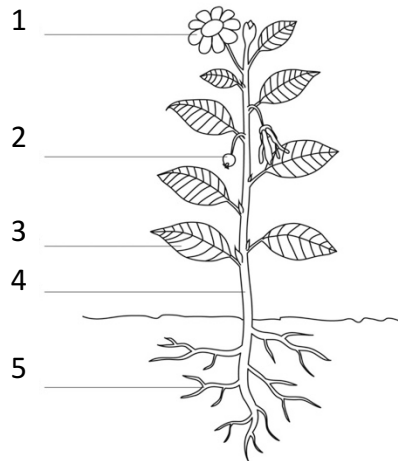
**A read-aloud story about PLANTS...** *Tops and Bottoms* by Janet Stevens - be ready to smile when you hear this story! 😊

<https://www.youtube.com/watch?v=sm5nAcqWmJU>

**Label the plant** diagram below using these words:

\*stem \*roots \*flower \*leaf \*seeds

answers below



**Experiment: Sprout a Bean Plant!**

1. Put a handful of **soil** in a **ziplock bag**
2. Poke 2 or 3 **bean seeds** or **dried beans** into the soil.
3. Add about a tablespoon of **water**.
4. Seal the bag **shut**.
5. Tape the bag **in a window**.
6. In a week, **the seeds may sprout!** Can you identify the parts of your plant?

Note: Use potting or garden soil. Dried beans like lima beans work well. A sandwich-size bag is big enough.

**Joke:** Why shouldn't you tell a secret in the garden?

*\*answer below*



For more nature activities,  
[www.nextstepadventure.com](http://www.nextstepadventure.com)

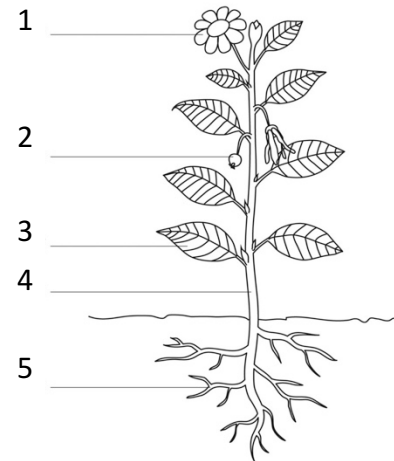


1. Flower 2. Seeds 3. Leaf 4. Stem 5. Roots  
Joke Answer: Because the potatoes have eyes and the corn has ears!

**Label the plant** diagram below using these words:

\*stem \*roots \*flower \*leaf \*seeds

answers below



**Experiment: Sprout a Bean Plant!**

1. Put a handful of **soil** in a **ziplock bag**
2. Poke 2 or 3 **bean seeds** or **dried beans** into the soil.
3. Add about a tablespoon of **water**.
4. Seal the bag **shut**.
5. Tape the bag **in a window**.
6. In a week, **the seeds may sprout!** Can you identify the parts of your plant?

Note: Use potting or garden soil. Dried beans like lima beans work well. A sandwich-size bag is big enough.

**Joke:** Why shouldn't you tell a secret in the garden?

*\*answer below*



For more nature activities,  
[www.nextstepadventure.com](http://www.nextstepadventure.com)



1. Flower 2. Seeds 3. Leaf 4. Stem 5. Roots  
Joke Answer: Because the potatoes have eyes and the corn has ears!